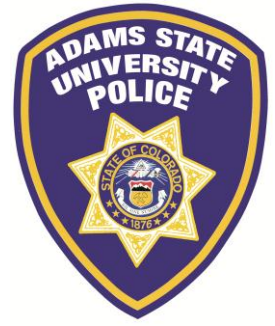




CAMPUS ALERT

Notification



ADAMS STATE UNIVERSITY POLICE DEPARTMENT

CRIME STOPPERS CASH REWARD OFFERED FOR INFORMATION LEADING TO THE ARREST OF THEIVES

If you have any information regarding recent thefts, **Please contact CRIME STOPPERS at (719)589-4111**

BICYCLE THEFTS

The Adams State University has experienced an increase in bicycle thefts recently, and would like to work in partnership with students, staff and the surrounding community to reduce and prevent further bicycle thefts, as well as ALL thefts on campus.

Things to do to protect your bicycle:

- Register your bicycle with ASU Police Department
- Record serial number/model/make/color of your bike
- Etch frame/parts with your personal ID, write ID inside rim or on a card inside frame
- Invest in at least one (1) quality bike lock (U-lock, 3/8" hex or quad chain, heavy padlock)
- Learn how to properly lock your bike
- Lock and secure your bike at all times when not in use
- If you keep your bike outside, use high quality locks to secure it to a permanently fixed location
- REPORT EVERY THEFT, even if we don't recover yours, it may help solve other crimes

Do not leave your bike unattended or unlocked, even if it's...

"just for a minute"

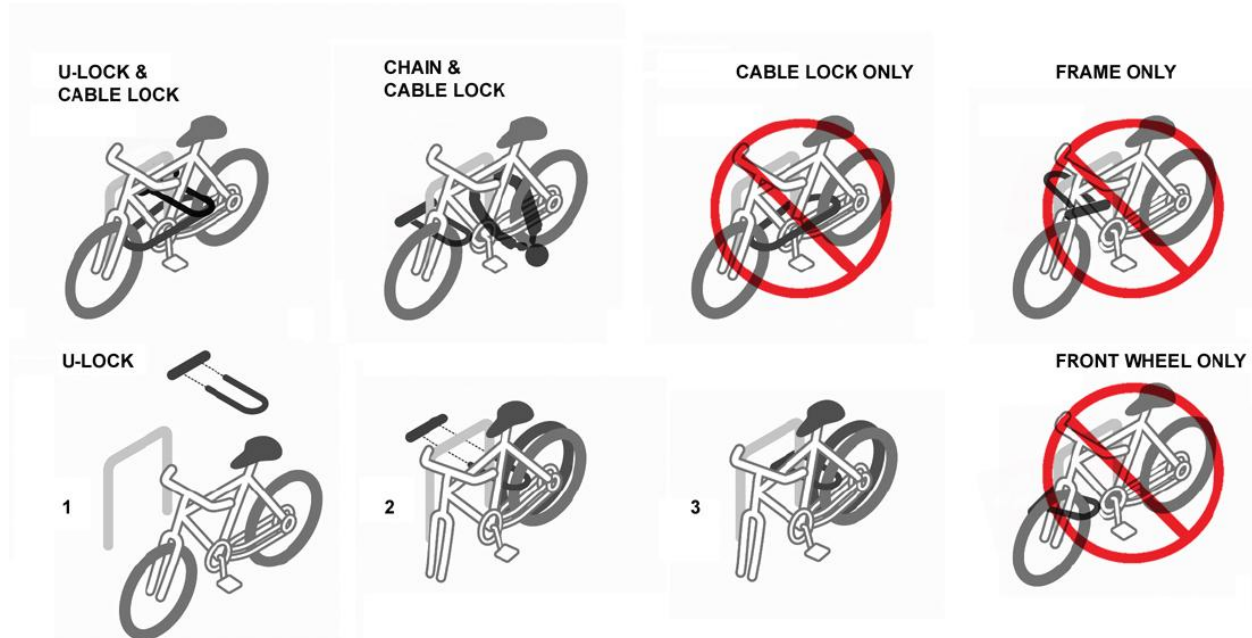
Thieves can steal a bike in minutes

How to get involved:

- If you see someone steal a bike call 911
- If you see suspicious activity or a prowler, call 719-589-5807
- Document suspect descriptions, hair & eye color, height & weight, clothing description including shoes
- Get to know your neighbors and exchange telephone numbers
- Log on to www.adams.edu/ps/index.php

How to lock your bike:

- Take a quick release front wheel with you or take it off and lock it up to the frame
- Always lock your rear wheel, frame and front wheel. Cable lock your seat for extra protection
- Secure the lock tightly. Leave no room for a lever or crowbar to pry the lock open
- Always take accessories (lights, bottles, computers, bags, bells, etc.) with you or lock them to your bike
- Use locking skewers and bolts for your wheels, seatpost, headset, and brakes
- Never lock only your front wheel, handlebars, seatpost, top, or head tube
- Don't rely on a bolt or screw to hold down anything – wrenches and screwdrivers are common tools



Where to lock your bike:

- Park at bicycle racks
- Properly secure it to a fixed location that can't be lifted up and away
- Keep the bike within your view, the view of the front door, or a highly pedestrian traveled area
- Don't lock your bike overnight in an unfamiliar neighborhood without many locks

DIY: Do It Yourself:

- DIY – hot glue ball bearings into tightly adjusted allen bolts
- DIY – zip tie loose items and accessories
- DIY – wrap parts in old innertube to cover and protect headset and stem
- DIY – slip a business card inside the bike frame
- DIY – write your name and phone number on the rim strip